

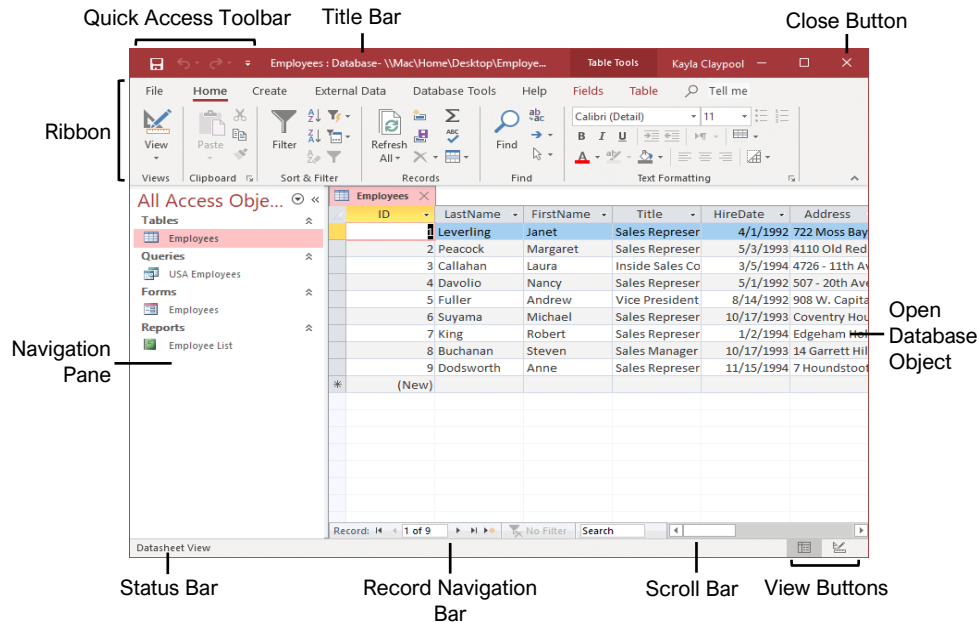


Microsoft®

Access 2019 Basic

Quick Reference Guide

The Access 2019 Program Screen



Keyboard Shortcuts

General

- Create a new database..... **Ctrl + N**
- Open a database..... **Ctrl + O**
- Close a database **Ctrl + W**
- Close Access **Alt + F4**
- Print current view **Ctrl + P**
- Help..... **F1**
- Delete record **Ctrl + -**
- Cancel changes **Esc**
- Insert date..... **Ctrl + ;**
- Insert time..... **Shift + Ctrl + ;**
- Insert value from same field in previous position..... **Ctrl + '**
- Spell check **F7**
- Switch applications..... **Alt + Tab**

Navigation

- Move between query or table rows **↑, ↓**
- Move between query or table columns..... **←, →**
- Next field..... **Tab**
- Previous field..... **Shift + Tab**
- Next screen **Page Down**
- Previous screen **Page Up**
- First record **Ctrl + ↑**
- Last record **Ctrl + ↓**
- Go to a specific record **F5**
- Toggle Navigation Pane..... **F11**

Access Basics

Open a Database: Click the **File** tab and select **Open**, or press **Ctrl + O**.

Save a Database: Click the **Save** button on the Quick Access Toolbar, or press **Ctrl + S**. Choose a location where you want to save the file. Give the file a name, then click **Save**.

Use the Navigation Pane: Click the **All Access Objects** button at the top of the Navigation Pane and select the type of object(s) you want to display.

Open a Database Object: Double-click an object in the Navigation Pane.

Modify a Database Object in Design View: Click the **View** button list arrow and select **Design View**.

Switch Object Tabs: If you have multiple objects open, click the tab for the object you want to display.

Rename a Database Object: In the Navigation Pane, right-click the object you want to rename and select **Rename**. Type a new name, and press **Enter**.

Delete a Database Object: Select the object you want to delete in the Navigation Pane, press the **Delete** key, and click **Yes**.

Get Help: Press **F1** to open the Help pane. Type your question in the Search field and press **Enter**.

Close a Database Object: Click the object's **Close** button in the upper-right corner of the window.

Close a Database: Click the **File** tab and select **Close**.

Database Objects

- Tables** store a database's data in rows (records) and columns (fields).
- Queries** ask a question of data stored in a table.
- Forms** are custom screens that provide an easy way to enter and view data in a table or query.
- Reports** present data from a table or query in a printed format.
- Macros** automate several tasks into a single command.
- Modules** automate commands using Visual Basic. Modules are similar to macros, but are more complex.

Editing

- Cut **Ctrl + X**
- Copy..... **Ctrl + C**
- Paste **Ctrl + V**
- Undo **Ctrl + Z**
- Redo..... **Ctrl + Y**
- Find **Ctrl + F**
- Replace **Ctrl + H**

Design View

- View properties **Alt + Enter**
- Open object in Design view **Ctrl + Enter**
- Save object..... **Ctrl + S**
- Switch to Form view **F5**

Databases

[Determine the Purpose of a Database:](#)

Planning a database is an important step in the creation process. Consider:

- Fields you need
- Tables you need
- The primary key
- Relationships between fields

[Create a Database from a Template:](#) Click the **File** tab and select **New**. Type a word/phrase that describes the database you want to create in the Search for online templates field and click **Search**. Select the template you want to use, name the new database, and click **Create**.

[Create a New Blank Database:](#) Click the **File** tab, select **New**, and click the **Blank database** button. Type a name for the new database, and click **Create**.

[Add a Record:](#) In Datasheet view, click the **New Record** button on the record navigation bar. Or, begin adding data in the blank bottom row of the table.

Record selector

	8 Buchanan	Steven
	9 Dodsworth	Anne
*	(New)	

Start adding a new record here

[Select a Record:](#) Click the **record selector** (gray box to the left of the record) for the record you want to select.

[Edit a Record:](#) Click the field you want to edit and make the necessary change. Press **Enter** to commit the change.

[Delete a Record:](#) Click the **record selector** next to the record you want to delete, click the **Delete** button on the ribbon, and click **Yes**.

[Select Multiple Records:](#) Click the **record selector** for the first record you want to select and drag to the last record you want to select.

[Select a Field:](#) Click the field (column) header for the field you want to select.

[Copy and Paste:](#) Select the data you want to copy, click the **Copy** button on the Home tab, then click where you want to paste the data, and click the **Paste** button.

[Check Spelling:](#) Click the **Home** tab and click the **Spelling** button, or press **F7**.

[Print Preview a Database Object:](#) Display the object you want to preview. Click the **File** tab, select **Print**, and click **Print Preview**.

[Print a Database Object:](#) Display the object you want to print. Click the **File** tab, select **Print**, and click **Print**.

Work with Data

[Find Data:](#) Select the column header or click in any cell in the field you want to search, and click the **Find** button on the Home tab. Type the text you want to find in the Find What field, and click the **Find Next** button.

[Replace Data:](#) Select the column header or click in any cell in the field where you want to replace text, and click the **Replace** button on the Home tab. Enter the word you want to find in the Find What field, then enter the text that will replace it in the Replace With field. Click **Replace** or **Replace All**.

[Sort Records:](#) Click anywhere in the column you want to sort and click either the **Ascending** or **Descending** button on the Home tab of the ribbon.

[Remove a Sort:](#) Click the **Remove Sort** button on the Home tab.

[Apply a Filter:](#) Click anywhere in the column you want to filter and click the **Filter** button on the Home tab. Uncheck the boxes for any data you want to hide and click **OK**.

[Filter by Selection:](#) Click in the column you want to filter, click the **Selection** button on the Home tab, and select an option from the menu.

[Filter by Form:](#) Click the **Advanced Filter Options** button on the Home tab and select **Filter by Form**. Click the empty cell below the field you want to filter, then click the list arrow and select the value you want to use to filter the records. Repeat this to filter by any additional fields, and click the **Apply Filter** button on the Home tab to filter the records.

[Clear Filters:](#) Click the **Advanced Filter Options** button on the Home tab of the ribbon and select **Clear All Filters**.

[Adjust Column Width:](#) Click and drag the column header's right border to the left or right. Or, double-click a header's right border to auto-size the column.

[Adjust Row Height:](#) Click and drag the row header's bottom border up or down.

[Freeze a Column:](#) Click the header for the column you want to freeze, click the **More** button on the Home tab, and select **Freeze Fields**.

[Unfreeze a Column:](#) Click the header for the column you want to unfreeze, click the **More** button on the Home tab, and select **Unfreeze All Fields**.

[Hide a Column:](#) Click the header for the column you want to hide, click the **More** button on the Home tab, and select **Hide Fields**.

[Unhide a Column:](#) Click any column header, click the **More** button on the Home tab of the ribbon, and select **Unhide Fields**.

Tables

[Create a New Blank Table:](#) Click the **Create** tab on the ribbon and click the **Table** button. Click the **Click to Add** field heading, select a field type, type a name for the field, and enter the data for the new field. Click the next **Click to Add** field heading to add another field.

[Create a Table in Design View:](#) Click the **Create** tab on the ribbon and click the **Table Design** button. Enter a name in the **Field Name** column and click in the first Data Type field. Click the **Data Type** list arrow, and select a data type for the field.

[Insert a Field:](#) In Design view, click the **record selector** for the field that will be below the new field, and click the **Insert Rows** button on the Table Tools Design tab. Enter a field name for the new field, press **Tab**, click the **Data Type** list arrow, and select a data type.

[Reorder a Field:](#) In Design view, click the **record selector** for the field you want to move, then click and drag the selected row up or down to the desired location.

[Delete a Field:](#) In Design view, click the **record selector** for the field you want to delete, and click the **Delete Rows** button on the Table Tools Design tab.

[Change a Field Type:](#) Open the table whose field(s) you want to modify in Design view, click in the field's **Data Type** box, click the **Data Type** list arrow, and select a data type.

[Add a Primary Key:](#) In Design view, select the field you want to use as your primary key, and click the **Primary Key** button on the Table Tools Design tab.

[Change a Field's Properties:](#) In Design view, select the field that you want to change the properties for, click in the property field you want to change, and enter the new settings.

[Change the Field Size:](#) In Design view, select the field whose size you want to change. Click in the **Field Size** field and type or select the field size.

[Index a Field:](#) In Design view, select the field you want to index, click in the **Indexed** property field, click its list arrow, and select an indexing option.

[Add a Description to a Field:](#) In Design view, click in the field's **Description** box and type the description.

[Add a Caption to a Field:](#) In Design view, select the field you want to add a caption to, click in the **Caption** property field, and type a caption.

[Add a Total Row:](#) In Datasheet view, click the **Totals** button on the Home tab. Click the cell in the **Total** row for the column you want to display the total for, and select the function you want to perform on the field.

CustomGuide

Get More Free Quick References!

Visit ref.customguide.com to download.



Microsoft

[Access](#)
[Excel](#)
[Office 365](#)
[OneNote](#)
[Outlook](#)
[PowerPoint](#)
[Teams](#)
[Word](#)

Google

[Gmail](#)
[Google Classroom](#)
[Google Docs](#)
[Google Drive](#)
[Google Meet](#)
[Google Sheets](#)
[Google Slides](#)
[Google Workspace](#)

OS

[macOS](#)
[Windows 10](#)

Productivity

[Computer Basics](#)
[Salesforce](#)
[Zoom](#)

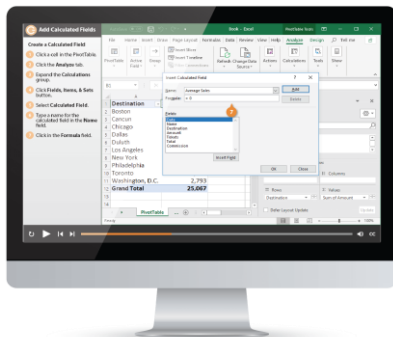
Soft Skills

[Business Writing](#)
[Email Etiquette](#)
[Manage Meetings](#)
[Presentations](#)
[Security Basics](#)
[SMART Goals](#)

+ more, including [Spanish versions](#)

Loved by Learners, Trusted by Trainers

Please consider our other training products!



Interactive eLearning

Get hands-on training with bite-sized tutorials that recreate the experience of using actual software. SCORM-compatible lessons.



Customizable Courseware

Why write training materials when we've done it for you? Training manuals with unlimited printing rights!

Over 3,000 Organizations Rely on CustomGuide



“ *The toughest part [in training] is creating the material, which CustomGuide has done for us. Employees have found the courses easy to follow and, most importantly, they were able to use what they learned immediately.* ”

Contact Us!

sales@customguide.com

612.871.5004